

BOTANICA

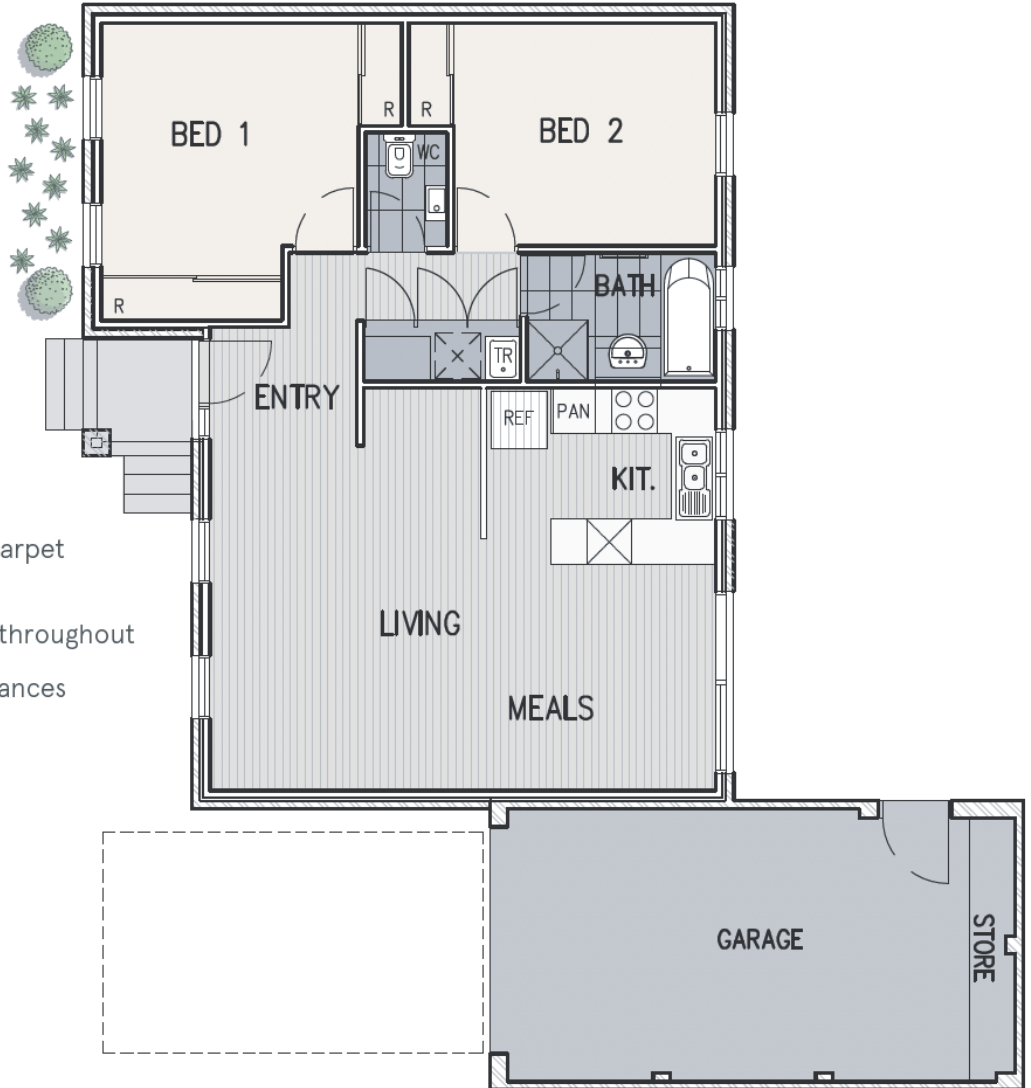
AT WATERHAVEN

Lotus



Features:

- Spacious open plan living
- High quality finishes throughout
- Spacious bedrooms with BIR's
- Bathroom with separate shower and bath
- Separate laundry & toilet
- Neutral colour schemes
- Double glazed windows
- Laminated timber floorboards, carpet & tiles throughout
- Reconstituted stone benchtops throughout
- Italian made stainless steel appliances
- Gas cook top
- Rear courtyard
- Remote garage with storage
- Front & rear landscaping
- Ducted air conditioning
- Underfloor heating - bathroom



Area*

Living	83.11m ²
Garage	26.79m ²
Porch	2.25m ²
Total	112.15m²

*Approx



This information is intended as a guide only. Purchasers should satisfy themselves as to the correctness of the information prior to purchasing any property. Please contact one of our consultants to obtain a copy of the contract of sale.