

# BOTANICA

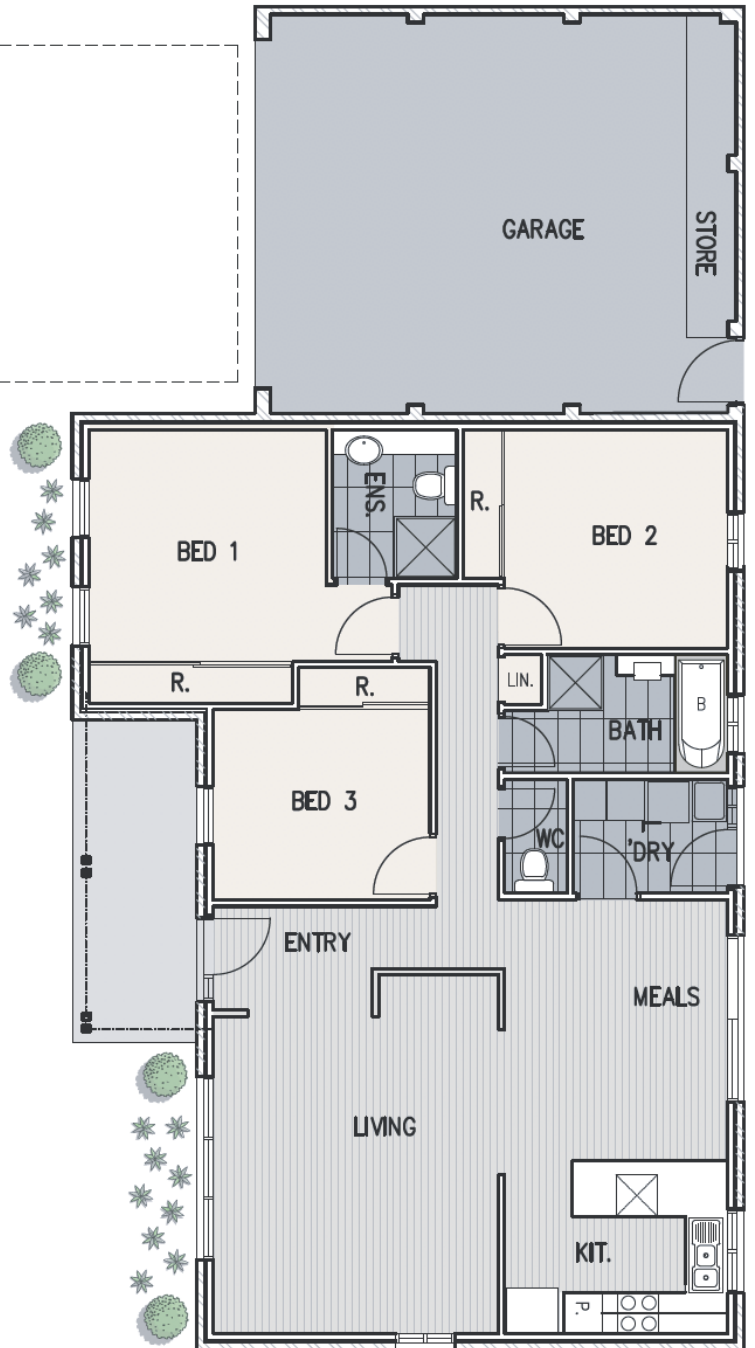
AT WATERHAVEN

## Lily



### Features:

- Spacious open plan living
- High quality finishes throughout
- Spacious bedrooms with BIR's
- Bathroom with separate shower & bath
- Separate laundry & toilet
- Neutral colour schemes
- Double glazed windows
- Engineered timber floorboards, carpet & tiles throughout
- Reconstituted stone benchtops throughout
- Italian made stainless steel appliances
- Gas cook top
- Rear courtyard
- Remote double garage with storage
- Front & rear landscaping
- Ducted air conditioning
- Underfloor heating - bathroom



### Area\*

Living	115.19m <sup>2</sup>
Garage	41.50m <sup>2</sup>
Porch	7.44m <sup>2</sup>
<b>Total</b>	<b>164.13m<sup>2</sup></b>

\*Approx

0 1.0M 2.0M 3.0M 4.0M  
SCALE BAR

This information is intended as a guide only. Purchasers should satisfy themselves as to the correctness of the information prior to purchasing any property. Please contact one of our consultants to obtain a copy of the contract of sale.